

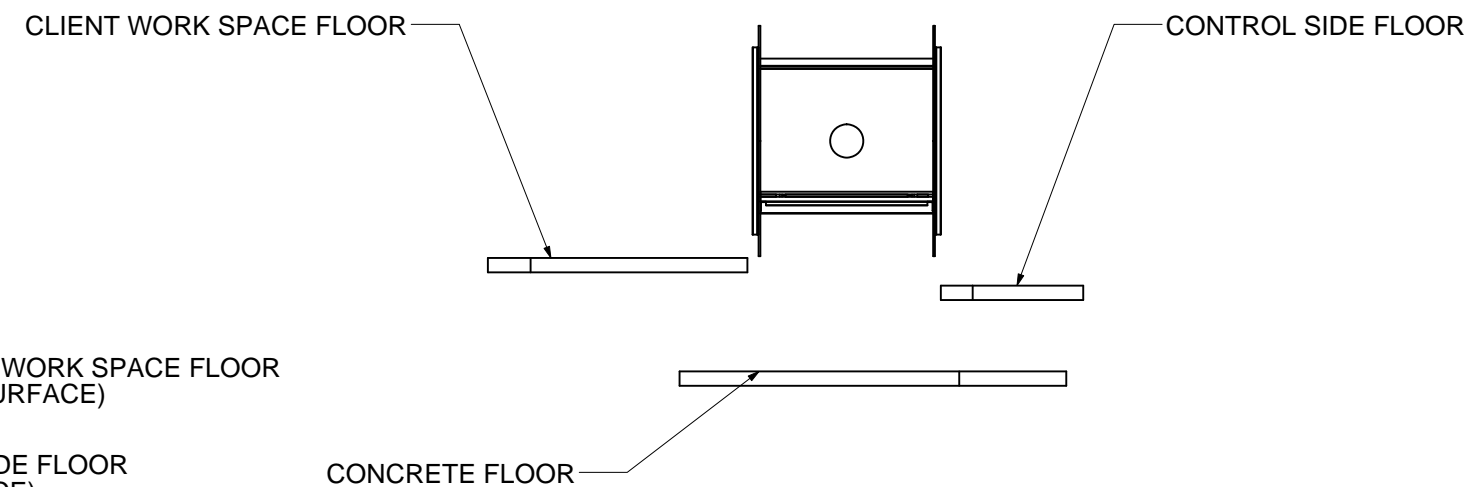
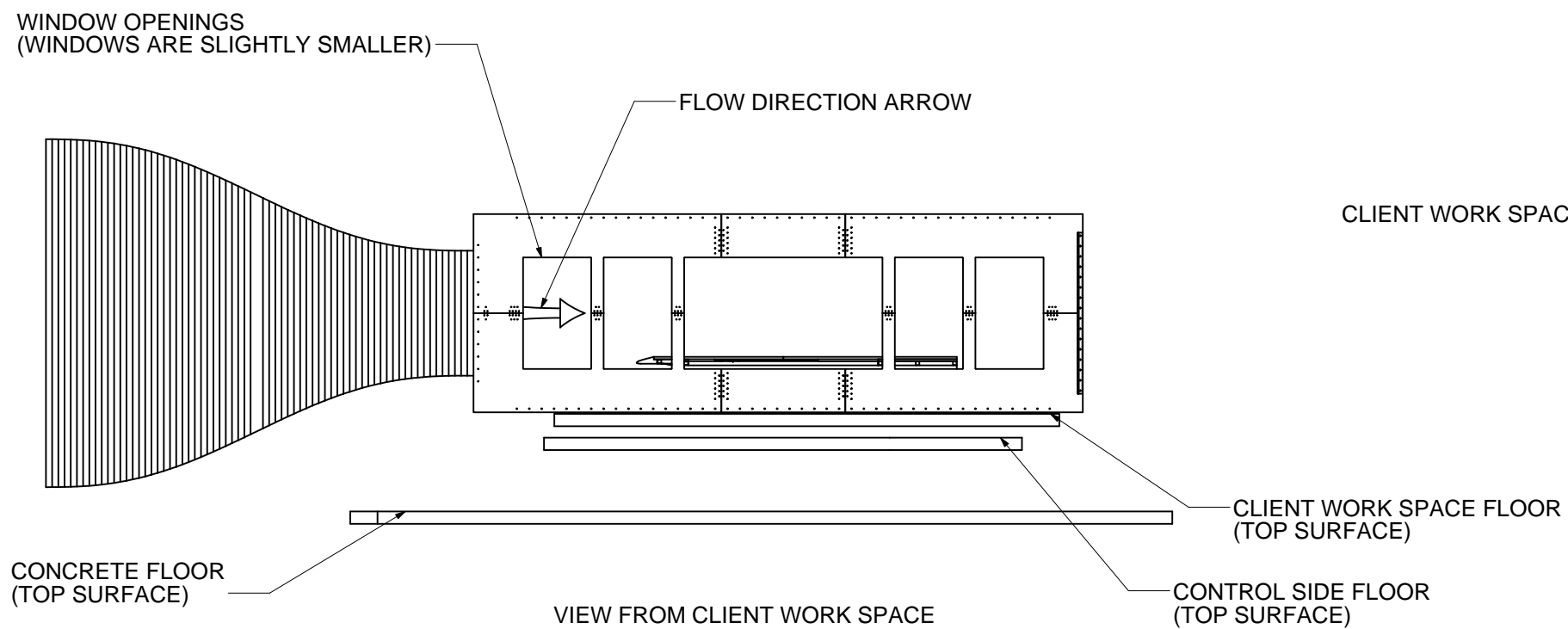
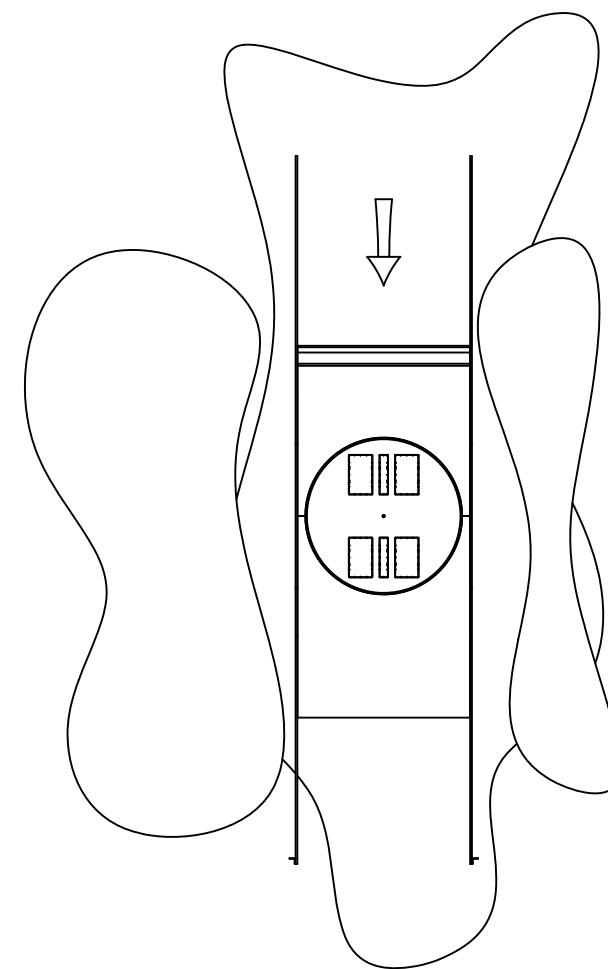
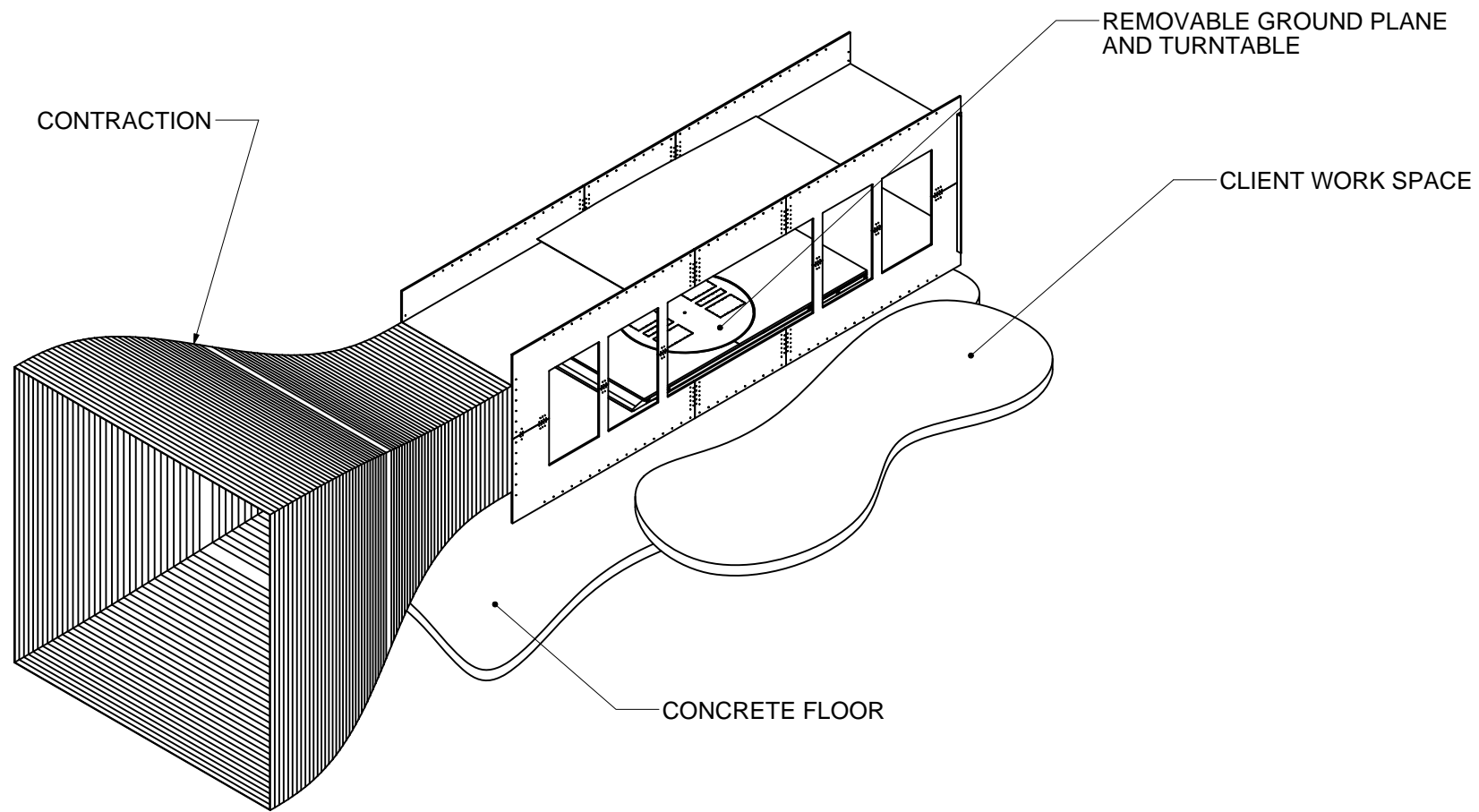
S:\pelles7\Documents\Projects\Caltech\Lucas Tunnel\CAD\Test section assembly; model last modified 05/12/2012 10:07:01, drawing last modified 05/12/2012 10:10:14

| REV. | DESCRIPTION | DATE |
|------|---|------------|
| A | INITIAL RELEASE | 05/31/2011 |
| B | ADDED BALANCE MOMENT CTR AND AXES INFO. | 07/18/2011 |
| C | ADDED MEASURED DEFLECTED CEILING | 05/12/2012 |

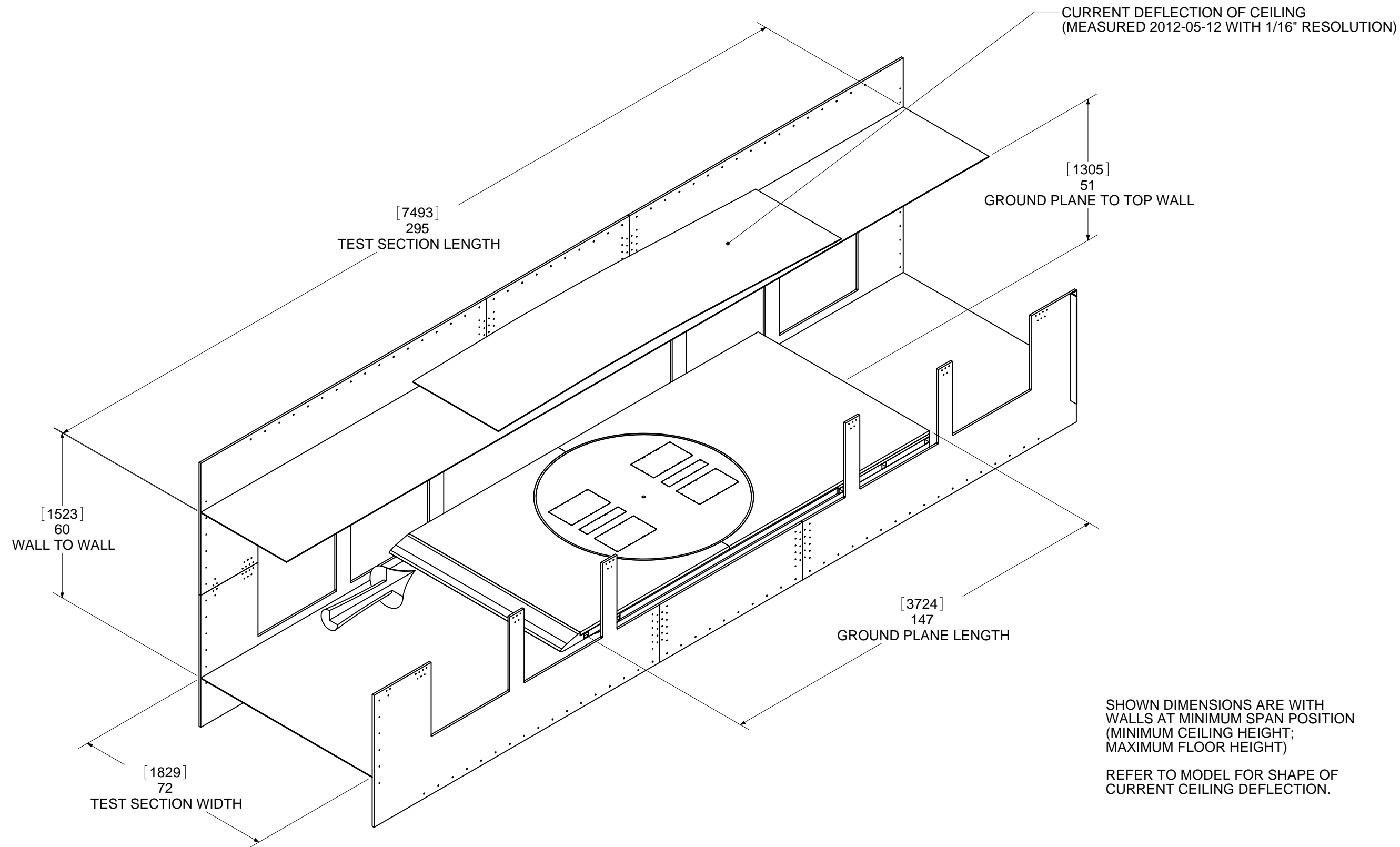
Caltech
 Emilio Graff
 Lucas AWWT
 ecg@caltech.edu
 626 395 4795
 M/C 205-45
 1200 E. California Blvd.
 Pasadena, CA 91125
 ©2011 ALL RIGHTS RESERVED

DIMENSIONS IN INCHES [MM]
 DIMENSIONS FOR INDICATION ONLY. CONSULT CAD MODEL AND TUNNEL TECHNICAL MANAGER FOR CRITICAL FITS.

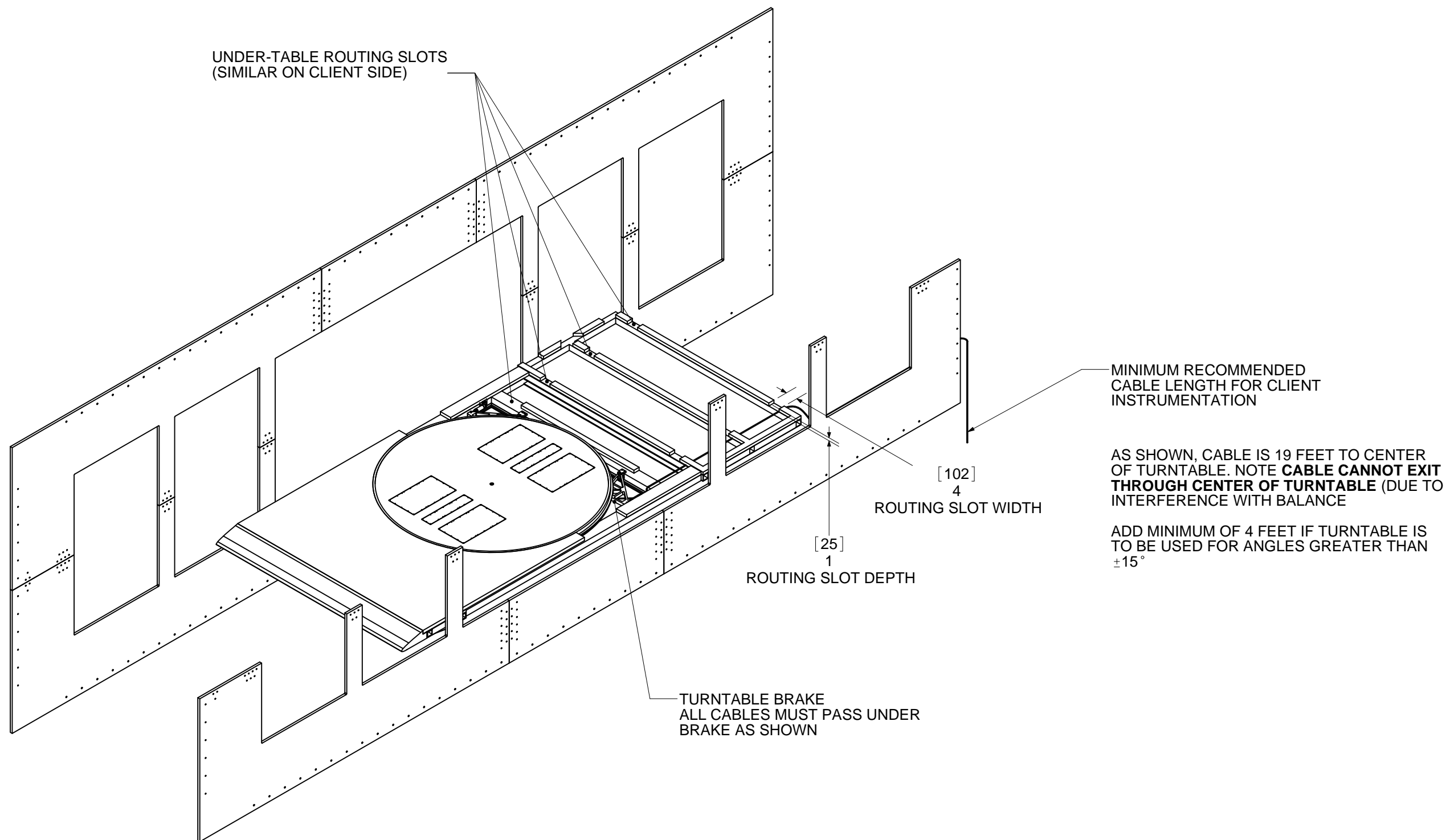
| | | | |
|---------------|----------------|--------------------------|--|
| PROJECT | | LUCAS WIND TUNNEL | |
| DRAWING TITLE | | TEST SECTION INFORMATION | |
| MATERIAL | | SHEET SIZE | |
| | | B | |
| FINISH | DRAWN BY | DATE | |
| | ECG | 05/12/2012 | |
| SHEET | DRAWING NUMBER | | |
| 1 OF 7 | LWT-999-002-C | | |



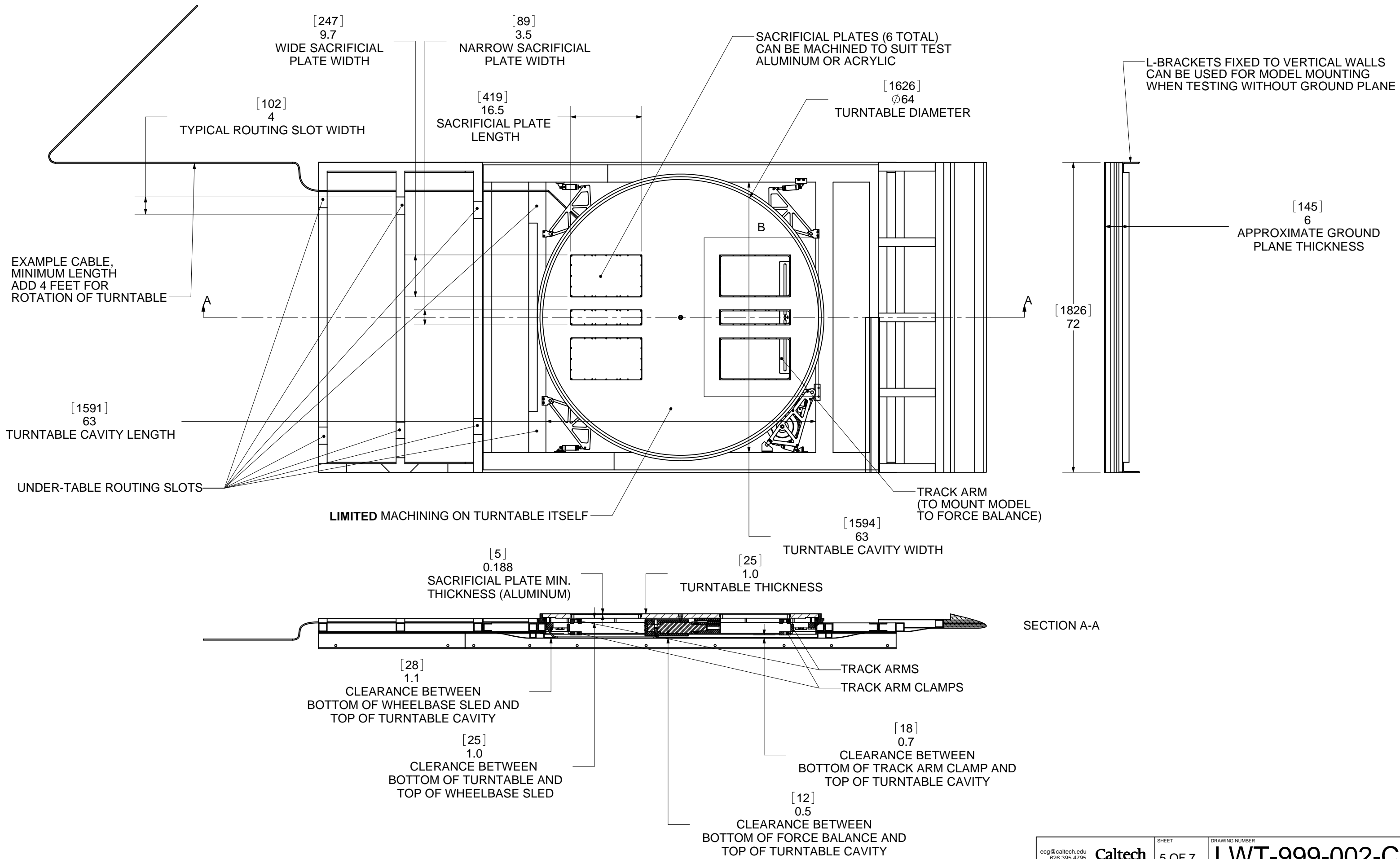
S:\pelles7\Documents\Projects\Caltech\Lucas Tunnel\CAD\Test section assembly; model last modified 05/12/2012 10:07:01, drawing last modified 05/12/2012 10:10:14



S:\pelles\Documents\Projects\Caltech\Lucas Tunnel\CAD\Test section\assembly; model last modified 05/12/2012 10:07:01, drawing last modified 05/12/2012 10:10:14



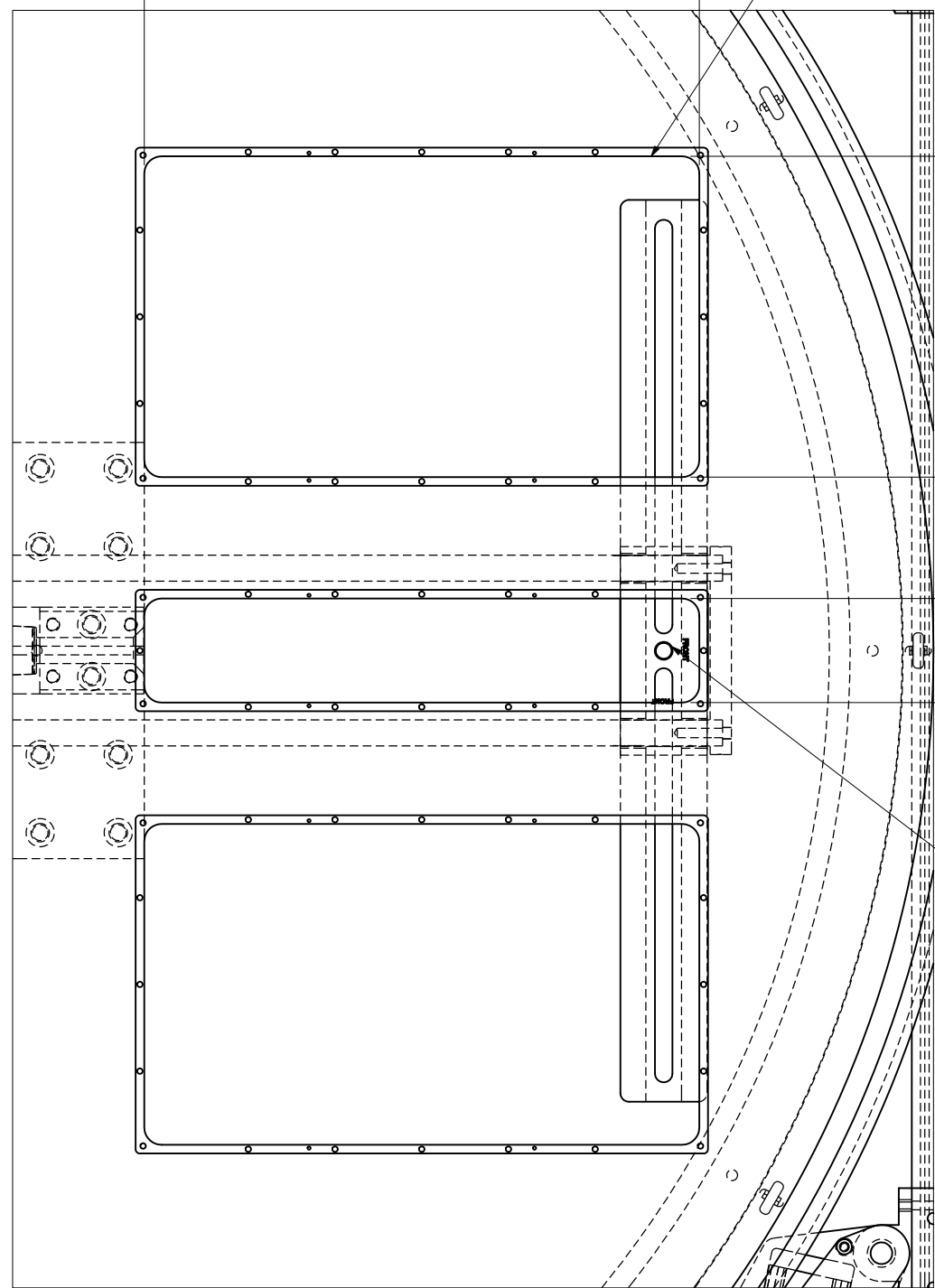
S:\pelosi\Documents\Projects\Caltech\Lucas Tunnel\CAD\Test section assembly; model last modified 05/12/2012 10:07:01, drawing last modified 05/12/2012 10:10:14



S:\pelles7\Documents\Projects\Caltech\Lucas Tunnel\CAD\Test section assembly; model last modified 05/12/2012 10:07:01, drawing last modified 05/12/2012 10:10:14

[406]
16.0
HOLE INSIDE LENGTH

INNER EDGE IS LIMIT OF
MODEL-MOUNTING STUD LOCATION

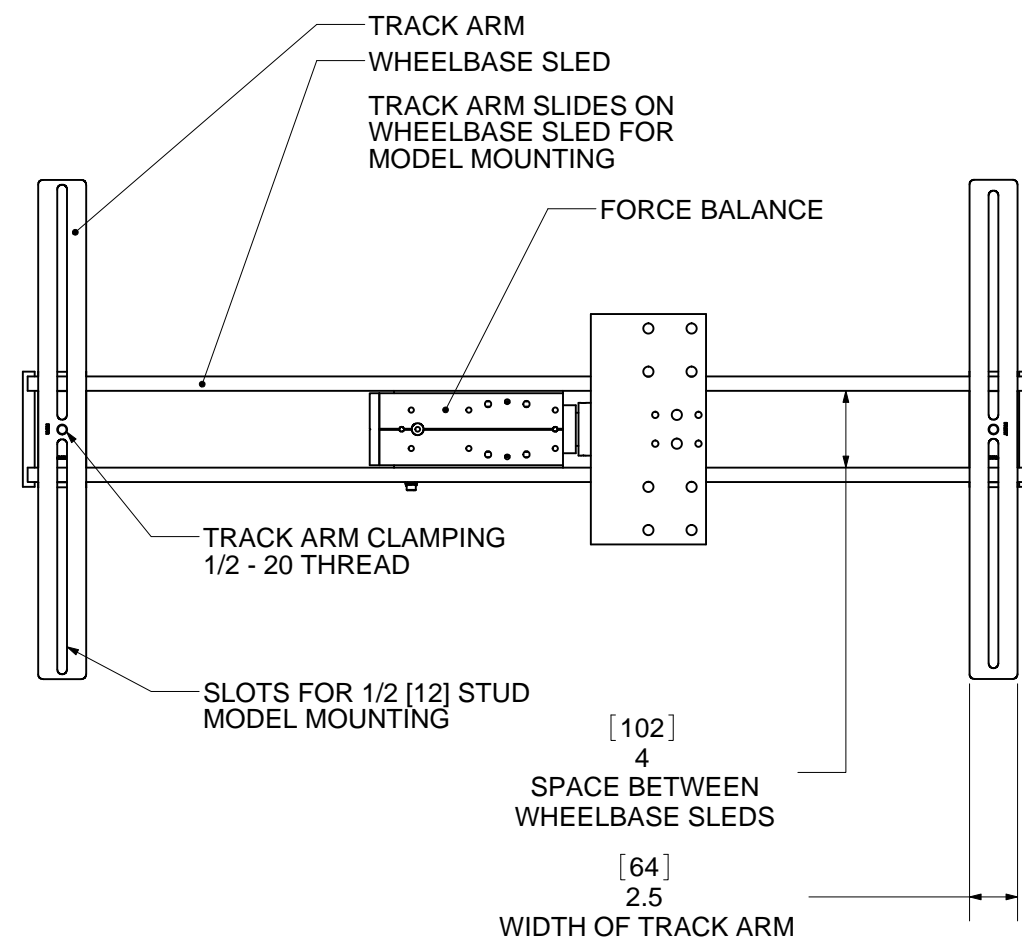


[235]
9.3
WIDE HOLE INSIDE WIDTH

[76]
3.0
NARROW HOLE INSIDE WIDTH

THIS HOLE USED FOR
TRACK ARM CLAMPING

DETAIL B



TRACK ARM
WHEELBASE SLED
TRACK ARM SLIDES ON
WHEELBASE SLED FOR
MODEL MOUNTING

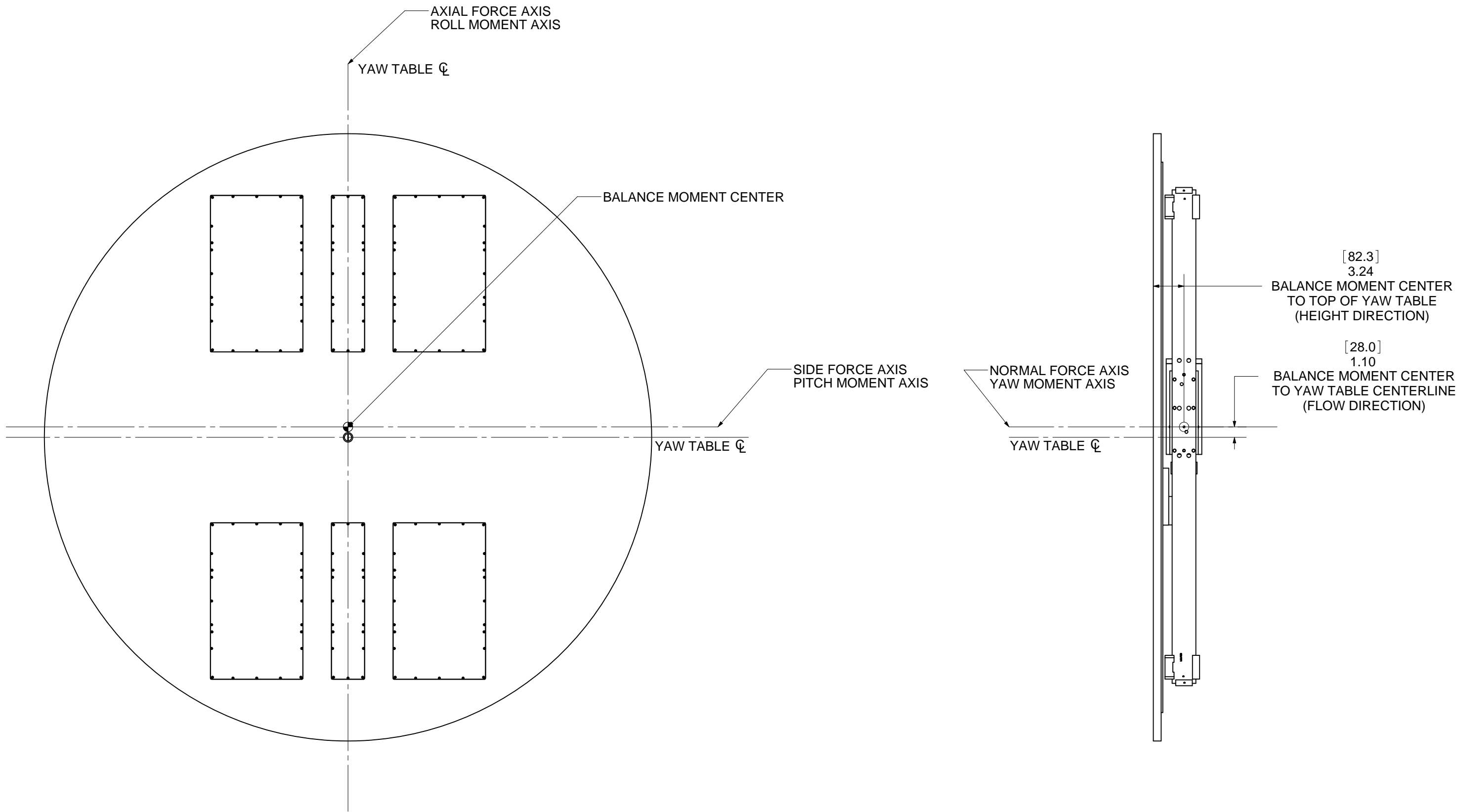
FORCE BALANCE

TRACK ARM CLAMPING
1/2 - 20 THREAD

SLOTS FOR 1/2 [12] STUD
MODEL MOUNTING

[102]
4
SPACE BETWEEN
WHEELBASE SLEDS

[64]
2.5
WIDTH OF TRACK ARM



S:\pelosi\Documents\Projects\Caltech\Lucas Tunnel\CAD\Test section assembly; model last modified 05/12/2012 10:07:01, drawing last modified 05/12/2012 10:10:14